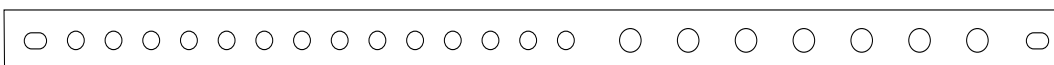


Ground Bars, Termination Panels and Lugs

Ground Bars

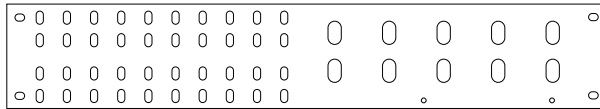
GROUND BARS						
AMP CAPACITY	BUS BAR SIZE	PART NO.	LUG POSITIONS 1/4" (.64cm) HDW. 5/8" (.83cm) C-C	LUG POSITIONS 3/8" (.95cm) HDW. 1" (2.54cm) C-C	LUG POSITIONS 1/2" (1.27cm) HDW. 1-3/4" (4.45cm) C-C	NOTES
19" (48.26cm) GROUND BARS						
400	1/4" x 1" (.64cm x 2.54cm)	347656500	14	7		NOTE 1
700	1/4" x 2" (.64cm x 5.08cm)	342575800	20 (1 HOLE)	10		
700	1/4" x 2" (.64cm x 5.08cm)	342576300	21			
800	1/4" x 2-1/4" (.64cm x 5.72cm)	342761000	21			
1200	1/4" x 4" (.64cm x 10.16cm)	343263500	46	1		NOTE 2
1200	1/4" x 4" (.64cm x 10.16cm)	343264700	40			
23" (58.42cm) GROUND BARS						
400	1/4" x 1" (.64cm x 2.54cm)	347656600	19	8		NOTE 1
700	1/4" x 2" (.64cm x 5.08cm)	436109600		17		NOTE 3
700	1/4" x 2" (.64cm x 5.08cm)	342576400		26		
800	1/4" x 2-1/4" (.64cm x 5.72cm)	342760900	18	4		
1200	1/4" x 4" (.64cm x 10.16cm)	343259500	28		4	NOTE 2
1200	1/4" x 4" (.64cm x 10.16cm)	343261900	20		5	
1200	1/4" x 4" (.64cm x 10.16cm)	343262800	48		3	
1200	1/4" x 4" (.64cm x 10.16cm)	343263100	16 (1 HOLE)		8	
1200	1/4" x 4" (.64cm x 10.16cm)	343263000		32		
30" (76.2cm) GROUND BARS						
1200	1/4" x 4" (.64cm x 10.16cm)	343263200		46		NOTE 2
1900	1/4" x 6" (.64cm x 15.24cm)	343475200			13	
<p>Notes:</p> <ol style="list-style-type: none"> 1/4" (.64cm) x 1" (2.54cm) ground bars are arranged for single hole lugs. All other bars are arranged for two hole lugs. For a 2,400 amp capacity, order two of the 1,200 amp ground bars. This ground bar is mounted on a 5-1/4" (13.34cm) x 23" (58.42cm) panel. 						



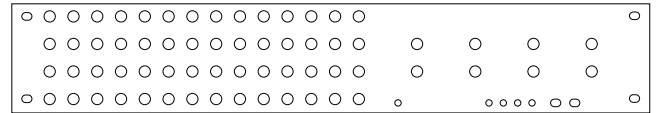
Typical Mounting, Single Holes

Ground Bars, Termination Panels and Lugs

Ground Bars (continued)



Typical Mounting, Double Slots



Typical Mounting, Double Holes

Ground Bar Accessories

ACCESSORIES			
DESCRIPTION	PART NO.	NOTES	
GROUND STRIP KIT (SEE FIGURE 1)	483553000	40 WIRE WRAP TERMINALS	
INSULATED STANDOFF MOUNTING KIT ASSEMBLY (SEE FIGURE 2)	1" x 7" (2.54cm x 17.78cm)	413303700	USE WITH 1" (2.54cm) GROUND BARS
	2" x 4" (5.08cm x 10.16cm)	413303600	BARS
	2" x 7" (5.08cm x 17.78cm)	413303800	
	4" OR 6" x 4" (10.16cm OR 15.24cm x 10.16cm)	413306700	USE WITH 4" (10.16cm) OR 6" (15.24cm) GROUND BARS
	4" OR 6" x 7" (10.16cm OR 15.24cm x 17.78cm)	413306800	
BUS BAR JUMPER FOR TWO 4" (10.16cm) GROUND BARS WITH 4" (10.16cm) AND 7" (17.78cm) STANDOFF KITS.	357318900		

Figure 1

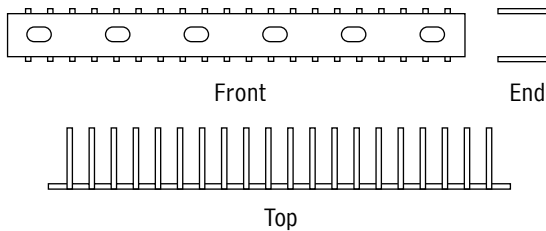
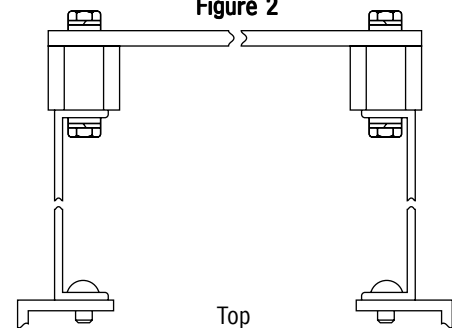


Figure 2



Application Notes

1. Ground bars are flat 1/4" (.64cm) bus bars mounted directly to relay rack uprights. To standoff and insulate from framework, refer to accessories table above.
2. Terminal lugs are not furnished. Order as required per tables.
3. Terminal lugs may be mounted back to back when additional positions are required.
4. Ground strip will occupy nine lug positions on 1" (2.54cm) ground bars (Figure 1 above).

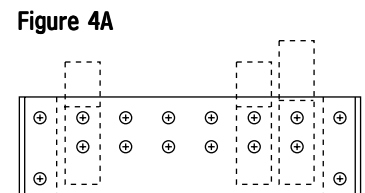
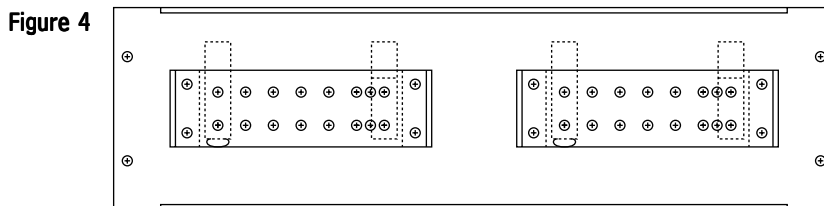
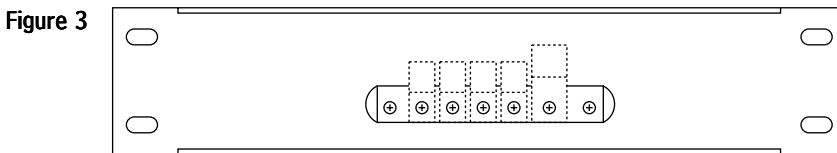
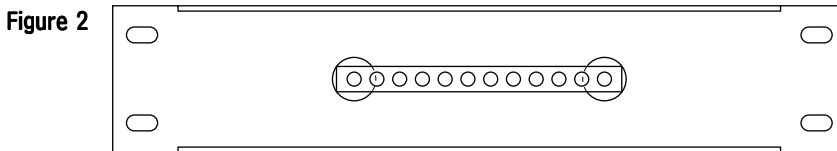
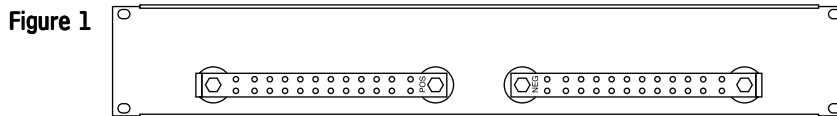
Ordering Information

1. Specify part number for 19" (48.26cm) or 23" (58.42cm) ground bar assembly.
2. Specify quantity and part number of accessory required (ground strip, standoff, etc.)

Ground Bars, Termination Panels and Lugs

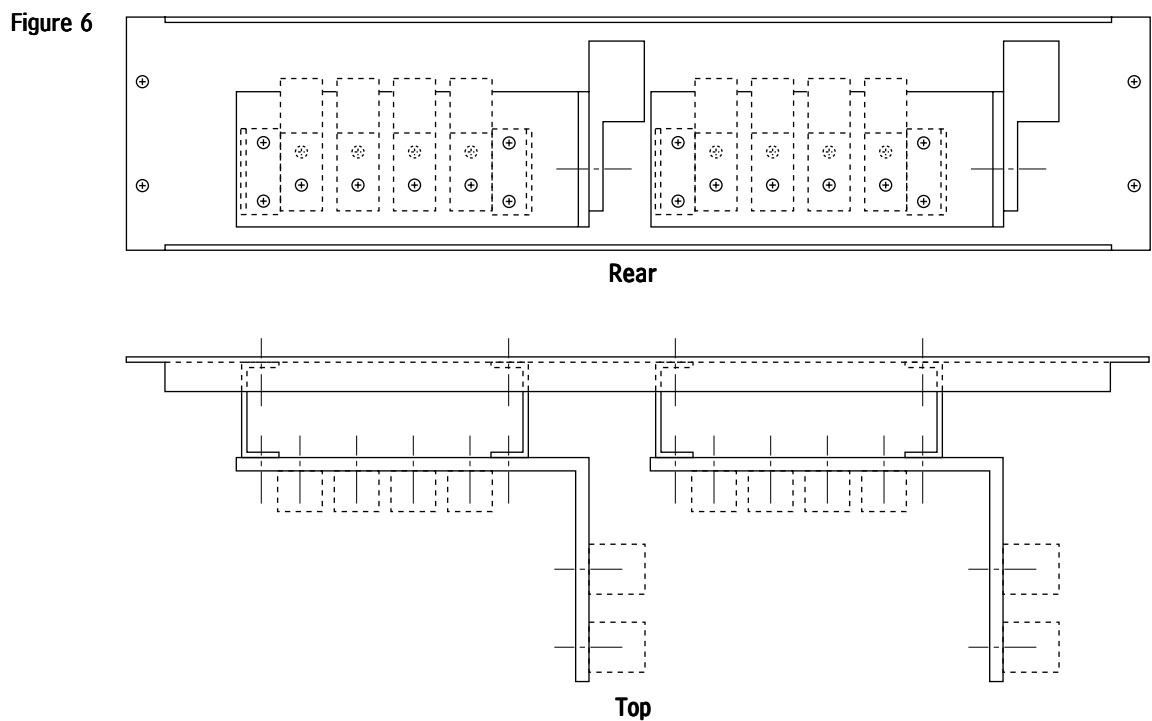
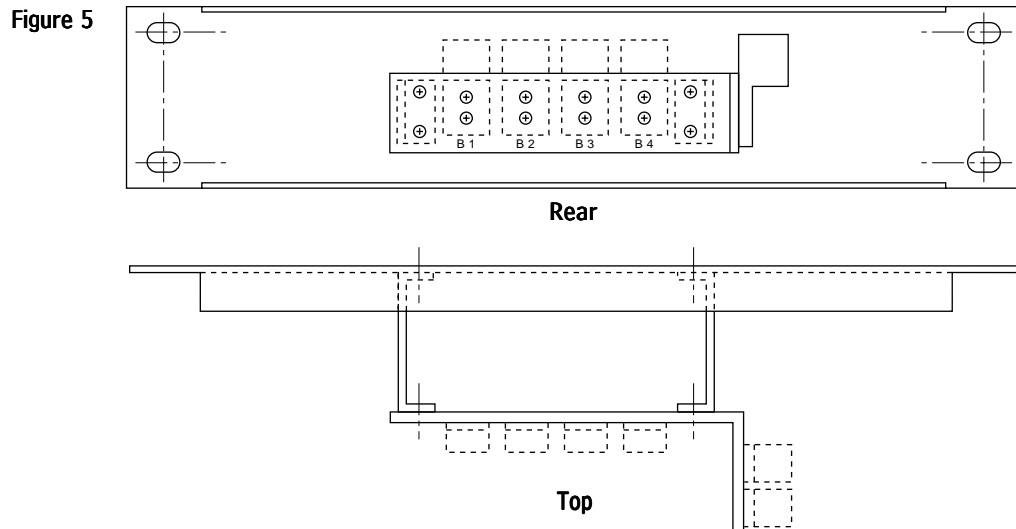
Termination Panels

TERMINATION PANELS						
Max amp Rating	Panel Size	Polarity	Part No.	Lug Positions	H.D.W.	See Fig.
175	19" x 3-1/2" (48.26cm x 8.89cm)	Single	434103000	10	#10 Single Hole	2
200	19" x 3-1/2" (48.26cm x 8.89cm)	Dual	434153900	12 PER	#10 (5/8" [1.59cm] C-C)	1
200	23" x 3-1/2" (58.42cm x 8.89cm)	Single	434103600	5	1/4" (.64cm) Single Hole	3
200	23" x 3-1/2" (58.42cm x 8.89cm)	Dual	434154000	12 PER	#10 (5/8" [1.59cm] C-C)	1
700	19" x 3-1/2" (48.26cm x 8.89cm)	Dual	434151300	6 PER	1/4" (.64cm) (3/4" [1.91cm] C-C) OR (1" [2.54cm] C-C)	4/4A
700	23" x 3-1/2" (58.42cm x 8.89cm)	Dual	434151400	7 PER	1/4" (.64cm) (5/8" [1.59cm] C-C) OR 3/8" (.95cm) (1" [2.54cm] C-C)	4
1000	23" x 5-1/4" (58.42cm x 13.34cm)	Single	434103100	6	3/8" (.95cm) (1" [2.54cm] C-C)	5
1000	23" x 5-1/4" (58.42cm x 13.34cm)	Dual	434145600	6 PER	3/8" (.95cm) (1" [2.54cm] C-C)	6



Ground Bars, Termination Panels and Lugs

Termination Panels (continued)



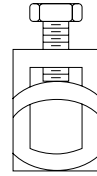
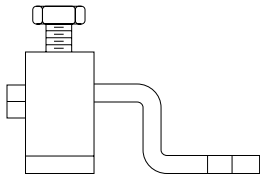
How to Order

1. Specify part number of termination panel.
2. Specify quantity and part number of lugs per job requirement. Refer to lug tables on LLP 6-9 & 6-10.

Ground Bars, Termination Panels and Lugs

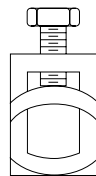
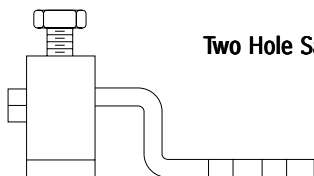
Lugs

TABLE A		
SINGLE HOLE SADDLE LUGS		
WIRE RANGE	HDW.	PART NO.
14-6	#10	245610700
14-4	1/4" (.64cm)	245612700
8-2		245612600
4-3/0		245613500
2-1/0		245610600
2-4/0	5/16" (.79cm)	245615000
4-3/0	3/8" (.95cm)	245616800
1/0-350MCM		245617000
1/0-500MCM		245617300
1/0-500MCM	1/2" (1.27cm)	245617700
600-1000MCM		245618900
1/0-500MCM	7/8" (2.22cm)	245619900
600-1000MCM		245619000



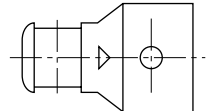
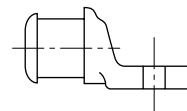
Single Hole Saddle Type

TABLE B		
TWO HOLE SADDLE LUGS		
WIRE RANGE	HDW.	PART NO.
14-6	#10 (5/8" [1.59cm] C-C)	245630900
14-6	#10 (1" [2.54cm] C-C)	245630800
8-2	1/4" (.64cm) (5/8" [1.59cm] C-C)	245632400
8-2	1/4" (.64cm) (1" [2.54cm] C-C)	245632500
2-1/0	1/4" (.64cm) (5/8" [1.59cm] C-C)	245632900
2-1/0	1/4" (.64cm) (1" [2.54cm] C-C)	245632600
2-4/0	5/16" (.79cm) (1" [2.54cm] C-C)	245633800
1/0-350MCM	3/8" (.95cm) (1" [2.54cm] C-C)	245634400
1/0-500MCM		245634600
600-1000MCM		245639700



Two Hole Saddle Type

TABLE C		
SINGLE HOLE CRIMP LUGS		
WIRE RANGE	HDW.	PART NO.
8	#10	245350100
6		245350200
4		245350300
8	1/4" (.64cm)	245350400
6		245350600
4		245350700
2		245350800
1		245350900
1/0		245351000
2/0		245351100
3/0	5/16" (.79cm)	245351200
4/0		245351300
6		245351380
4		245351390
2		245351400
1	3/8" (.95cm)	245351410
3/0		245351500
4		245352085
1/0		245352100
2/0		245352300
4/0	1/2" (1.27cm)	245352200
4		245354100
2		245354200
1/0		245354300
2/0		245354400
3/0		245354500
4/0		245354600
250MCM		245354700
350MCM		245354800
500MCM		245354000



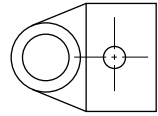
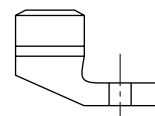
Single Hole Crimp Type

Ground Bars, Termination Panels and Lugs

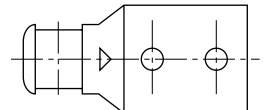
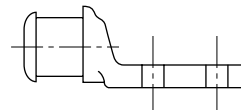
Lugs (continued)

TABLE D			
TWO HOLE CRIMP LUGS			
WIRE RANGE	HDW.	PART NO.	
14-10	#10 (5/8" [1.59cm] C-C)	245390100	
8		245346600	
6		245346500	
14-10	1/4" (.64cm) (5/8" [1.59cm] C-C)	245342300	
8		245391600	
6		245346700	
4		245346800	
2		245346900	
1		245347000	
1/0		245391400	
2/0		245391500	
14-10		1/4" (.64cm) (1" [2.54cm] C-C)	245391295
6			245392101
4	245346805		
2	245346905		
14-10	3/8" (.95cm) (1" [2.54cm] C-C)	245391300	
8		245349800	
6		245349900	
4		245350000	
2		245348200	
1/0		245347100	
2/0		245347200	
3/0		245347300	
4/0		245347400	
250MCM		245347500	
300MCM		245347600	
350MCM		245347700	
400MCM		245347800	
500MCM		245347900	
600MCM		245348000	
750MCM		245392000	
1/0		1/2" (1.27cm) (1-3/4" [4.45cm] C-C)	245348300
2/0			245348400
3/0			245348500
4/0	245348600		
250MCM	245348700		
350MCM	245348900		
500MCM	245349200		
600MCM	245349300		
750MCM	245349500		

TABLE E		
SINGLE HOLE CRIMP LUGS (90°)		
WIRE RANGE	HDW.	PART NO.
14-10	1/4" (.64cm)	245350385
8		245350410
6		245350605
4		245350690
2		245350810
1/0	245351005	
8	3/8" (.95cm)	245352060
6		245352070
4		245352080
2		245352090
1/0		245352101
2/0		245352150
4/0		245352201



Single Hole Crimp Type - 90°



Two Hole Crimp Type



www.marconi.com/power
Marconi Communications
 1122 F Street
 Lorain, OH 44052
 800-800-1280
 Fax: 440-246-4876

© 2000 Marconi Communications Inc.
 Printed in the USA. All rights reserved. Any unauthorized reproduction or transmission without the prior consent of Marconi Communications Inc. is prohibited.