



600

Nexsys Dual Power Multi-Mount UPS



Flexible UPS solution for communication providers that require conditioned, uninterrupted power.

Uses standard receptacles for AC power and terminal blocks for DC output.

Three configurations: Wall, Rack, or Tower, by simply changing the position of the mounting brackets.

RS-232 Communication for remote monitoring with ASCII commands and terminal emulation software.

Additional run time added via external battery packs up to 8 hours.

The Nexsys Dual Power UPS provides up to eight hours of backup power and protects channel bank systems and other telecommunications equipment from damage by line noise, surges, spikes and brownouts. The mounting flexibility of the Nexsys Dual Power makes it an excellent choice for telecommunications applications. Telephony providers are purchasing a universal UPS that can be used in a variety of locations and can be changed to meet new mounting requirements. This new-concept line interactive UPS incorporates high efficiency power conditioning with the longest available internal runtime. All batteries are hot swappable and are regulated by Alpha's "Smart Charger" technology. This ensures internal batteries are always at peak performance and automatically selects a higher charge current when an external battery pack is connected.

Nexsys Dual Power 600

Mounting Options



Rack Mount



Tower Mount



Wall Mount

The Nexsys Dual Power 600 is designed to be installed in any one of three configurations: Rack Mount, Tower Mount or Wall Mount. The installation can be changed by simply changing the position of the mounting brackets.

These brackets – included with all Dual Power 600 models – enable the unit to be rack mounted at front, mounted to a wall, or stand on the floor next to sensitive equipment.

Nominal Specifications

Dual Power 600 Series

• Input	
Voltage (VAC)	120
Voltage Range (VAC)	92-135
Frequency (Hz)	57-63
Current Max (A)	5.5A
• DC Output	
Voltage (V DC)	42-56
Output Current (A DC)	4
Charge Current Max. (A DC)	3
• AC Output	
Output Power (VA)	600
Active Output Power (W)	420
Output Voltage Range	12%
Voltage Waveform	Sinewave
Voltage Regulation on Inverter	±5%
Typical Efficiency	>95%
Typical Output Voltage THD	< 5%
Battery Runtime Available	up to 8 hours*
Typical transfer time (msec)	2-4 typ
Audible noise at 1m (dBA)	<40
Operating Temperature (°C)	-10 to +40
• Indicators	
- ON LINE	- ON BATT
- FAULT	- OVER LOAD
- BATT LOW	- OUTPUT LOAD
• Mechanical	
Dimensions (in/mm)	16.5W x 17D x 7H (420mmx178mmx432mm)
Weight (lbs/kg)	101 / 45.8
• Certifications	
FCC Class A	EN 60950
UL 1778	CSA 107

* Battery runtime depends on the AC and DC loads, battery and operating temperature.

Communications Features

DB-9 compatible connector / RS-232 interface capable of monitoring, controlling and calibrating the Nexsys Dual Power 600 using ASCII commands with terminal emulation software.

Brownout Protection

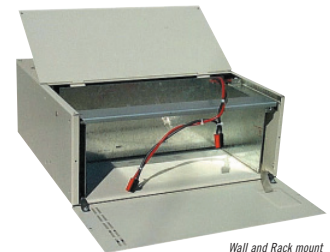
The Nexsys Dual Power 600's automatic boost mode increases output voltage by up to 12% of nominal line voltage if input voltage falls below 12% of nominal.

Diagram



Battery Features

- Quick and Easy**
Internal battery servicing, even from wall & rack mount configurations.
- Maintenance Free**
Two 24 VDC 17 Ah replaceable internal battery modules.



Wall and Rack mount Access Panel shown open



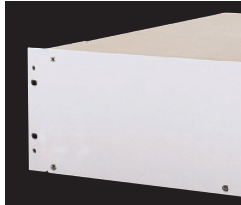
Internal battery module



Nexsys Dual Power 300



Mounting Options



Rack Mount



Tower Mount



Wall Mount

The Nexsys Dual Power 300 is designed to be installed in any one of three configurations: Rack Mount, Tower Mount, Wall Mount. The installation can be changed by simply changing the position of the mounting brackets.

These brackets – included with all Dual Power 300 models – enable the unit to be rack mounted at front, mounted to a wall, or stand on the floor next to sensitive equipment.

Nominal Specifications

Dual Power 300 Series

• Input

Voltage (VAC)	120
Voltage Range (VAC)	92-135
Frequency (Hz)	57-63
Current Max (A)	3.8

• DC Output

Voltage (V DC)	42-56
Output Current (A DC)	4
Charge Current Max. (A DC)	3

• AC Output

Output Power (VA)	300
Active Output Power (W)	200
Output Voltage Range	12%
Voltage Waveform	Sinewave
Voltage Regulation on Inverter	±5%
Typical Efficiency	>95%
Typical Output Voltage THD	< 5%
Battery Runtime Available	up to 8 hours*
Typical transfer time (msec)	2-4 typ
Audible noise at 1m (dBA)	<40
Operating Temperature (°C)	-10 to +40

• Indicators

- ON LINE	- ON BATT	- BATT LOW
- FAULT	- OVER LOAD	- OUTPUT LOAD

• Mechanical

Dimensions (in/mm)	17W x 12D x 5.2H (432mmx305mmx132mm)
Weight (lbs/kg)	50 / 22.9

• Certifications

FCC Class A	EN 60950
UL 1778	CSA 107

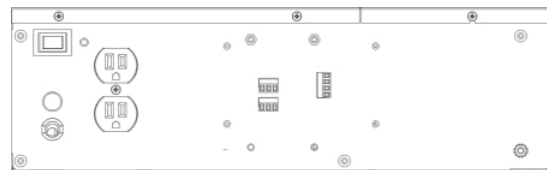
Communications Features

DB-9 compatible connector / RS-232 interface for remote monitoring, controlling and calibration using terminal emulation software and ASCII commands.

Brownout Protection

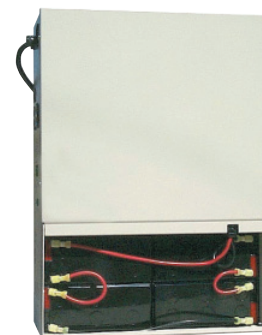
The Nexsys Dual Power 300's automatic boost mode increases output voltage by up to 12% of nominal line voltage if input voltage falls below 12% of nominal.

Diagram



Battery Features

- **Quick and Easy** internal battery servicing
- **Maintenance Free** Four 7.2 Ah batteries



* Battery runtime depends on the AC and DC loads, battery and operating temperature.