



## S2 Inverters 3000VA - 10kVA



Advanced microprocessor controlled status monitoring.

Easy front access and modular designed for rackmount into standard 19", 23" or 25" racks.

Local and remote operation with alarm contacts.

Optional AC distribution panel and maintenance bypass switch with frame assembly.

Universal flexibility designed for various fields selectable voltages and frequencies.

Alpha's S2 DC to AC Inverters are ideal for critical applications such as telecommunications, dataprocessing, internet providers and building security. The S2 Inverters provide precise monitoring of the system's parameters. Optional scroll switch and LCD display provides voltages, currents, load percentage, temperature and frequency. With hot swap capability, the inverters can be quickly removed without a loss of power to the critical load when an alternate AC source is available. This capability increases the availability of power to the critical loads. The Dual PWM technology with an isolated boost converter and high frequency switching provides excellent isolation between AC to DC for maximum efficiency and very low audible noise.

## Nominal Specifications

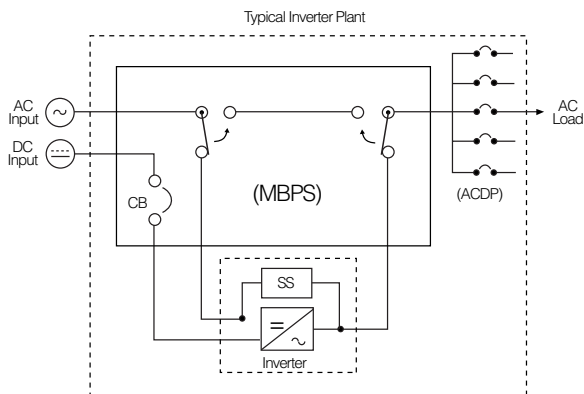
Model Number	S2 3000	S2 5000	S2 10,000
Output Power Rating (VA)	3000	5000	10,000
(W)	3000	2000	10,000
Input Voltage (VDC) Nominal	-48	-48	-48
Input Current Max. (A)	92	154	307
Typical Heat Output (BTU/h)	1265	4200	8500
<b>Mechanical</b>			
Height (Inches / mm)	17.5 / 44.5	24.5 / 62.2	42 / 106.7
Width (Inches / mm)	17 / 43.2	17 / 43.2	17 / 43.2
Depth (Inches / mm)	15 / 38.1	18 / 46	24.3 / 61.7
Weight (Lbs / kg)	170 / 77.1	230 / 104.3	440 / 200.6

Note: Brackets are provided for 19" or 23" rack mounting for 3kVA.  
Brackets are provided for 23" or 25" rack mounting for 5kVA and 10kVA.

## General Specifications

Input Voltage (VDC)	-42 to -56
Output Voltage (VAC) Selectable	100*/120/220/230/240
Output Waveform	Sinewave
Frequency (Hz) Selectable	50/60
Frequency (max.) Stable	+0.02%
Efficiency	85% Typical, 97% Standby
Output Power Factor	0.7 Lagging to 0.7 Leading
Harmonic Distortion (0 to 100% load)	5% max. for linear load from 10% to 100% load
Transfer Time	4 msec
Overload Capacity	300% for 1 one cycle, 200% for 30 seconds
DC Noise Feedback	< 32 dbrnc
Audible Noise	Less than 50dBA @ 4 feet
Operating Temperature	-10°C to +40°C / 55°C @ 80% load
Storage Temperature	-10°C to +40°C
Operating Altitude	up to 10,000 ft.
Safety Agency	UL, cUL, TUV, CE, FCC Class A
Warranty	One year

### Wraparound Bypass Switch/Distribution



### Typical Inverter with Static Switch

